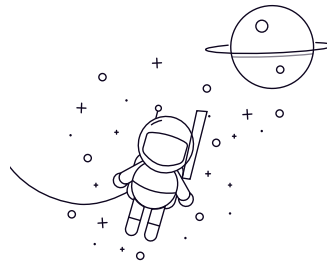


# GACZ..S



| select  | Inquiry | Bearing number | Overall dimension [mm] |       |       |        |       |       |      |     |                       |     | Rated load [kN] |             | Weight kg |
|---------|---------|----------------|------------------------|-------|-------|--------|-------|-------|------|-----|-----------------------|-----|-----------------|-------------|-----------|
|         |         |                | d                      | D     | B     | C      | T     | dk    | S    | A   | rsr <sub>1s</sub> max | a°  | live load       | Static load |           |
| GACZ12S | 12.7    | 22.225         | 6.86                   | 4.83  | 7.62  | 18.26  | 1.3   | 2.39  | 0.51 | 7   | 6                     | 18  | 0.013           |             |           |
| GACZ12S | 0.5     | 0.875          | 0.27                   | 0.19  | 0.3   | 0.719  | 0.051 | 0.094 | 0.02 | 7   | 6                     | 18  | 0.013           |             |           |
| GACZ15S | 15.875  | 26.988         | 8.64                   | 6.35  | 9.4   | 22.83  | 1.48  | 2.77  | 0.76 | 6   | 10                    | 31  | 0.025           |             |           |
| GACZ15S | 0.625   | 1.0625         | 0.34                   | 0.25  | 0.37  | 0.899  | 0.058 | 0.109 | 0.03 | 6   | 10                    | 31  | 0.025           |             |           |
| GACZ19S | 19.05   | 31.75          | 10.41                  | 7.87  | 11.18 | 27.43  | 1.79  | 3.18  | 1    | 6   | 16                    | 47  | 0.038           |             |           |
| GACZ19S | 0.75    | 1.25           | 0.41                   | 0.31  | 0.44  | 1.08   | 0.07  | 0.125 | 0.04 | 6   | 16                    | 47  | 0.038           |             |           |
| GACZ22S | 22.225  | 36.512         | 12.19                  | 9.65  | 13.21 | 31.95  | 2.02  | 4.37  | 2    | 5.5 | 22                    | 66  | 0.049           |             |           |
| GACZ22S | 0.875   | 1.4375         | 0.48                   | 0.38  | 0.52  | 1.258  | 0.08  | 0.172 | 0.08 | 5.5 | 22                    | 66  | 0.049           |             |           |
| GACZ25S | 25.4    | 41.275         | 13.97                  | 11.18 | 15.24 | 36.5   | 2.54  | 5.16  | 2    | 6   | 29                    | 87  | 0.085           |             |           |
| GACZ25S | 1       | 1.625          | 0.55                   | 0.44  | 0.6   | 1.437  | 0.1   | 0.203 | 0.08 | 6   | 29                    | 87  | 0.085           |             |           |
| GACZ31S | 31.75   | 50.8           | 17.78                  | 13.97 | 18.8  | 45.59  | 3.36  | 5.94  | 2    | 6   | 47                    | 142 | 0.159           |             |           |
| GACZ31S | 1.25    | 2              | 0.7                    | 0.55  | 0.74  | 1.795  | 0.132 | 0.234 | 0.08 | 6   | 47                    | 142 | 0.159           |             |           |
| GACZ34S | 34.925  | 55.562         | 19.56                  | 15.24 | 21.34 | 49.2   | 3.69  | 7.14  | 2.54 | 4   | 53                    | 159 | 0.213           |             |           |
| GACZ34S | 1375    | 2.1875         | 0.77                   | 0.6   | 0.84  | 1.937  | 0.145 | 0.281 | 0.1  | 4   | 53                    | 159 | 0.213           |             |           |
| GACZ38S | 38.1    | 61.912         | 21.34                  | 16.76 | 23.11 | 54.74  | 3.93  | 7.92  | 2.54 | 5.5 | 66                    | 197 | 0.301           |             |           |
| GACZ38S | 1.5     | 2.4375         | 0.84                   | 0.66  | 0.91  | 2.155  | 0.155 | 0.312 | 0.1  | 5.5 | 66                    | 197 | 0.301           |             |           |
| GACZ44S | 44.45   | 71.438         | 24.89                  | 20.07 | 27.18 | 63.88  | 4.72  | 8.33  | 2.54 | 6   | 91                    | 273 | 0.458           |             |           |
| GACZ44S | 1.75    | 2.8125         | 0.98                   | 0.79  | 1.07  | 2.515  | 0.186 | 0.328 | 0.1  | 6   | 91                    | 273 | 0.458           |             |           |
| GACZ50S | 50.8    | 80.962         | 28.7                   | 23.37 | 31.24 | 73.02  | 5.51  | 9.52  | 3.56 | 5.5 | 122                   | 365 | 0.671           |             |           |
| GACZ50S | 2       | 3.1875         | 1.13                   | 0.92  | 1.23  | 2.875  | 0.217 | 0.375 | 0.14 | 5.5 | 122                   | 365 | 0.671           |             |           |
| GACZ57S | 57.15   | 90.488         | 32.26                  | 26.67 | 35.31 | 82.17  | 6.18  | 11.51 | 3.56 | 5.5 | 155                   | 466 | 0.948           |             |           |
| GACZ57S | 2.25    | 3.5625         | 1.27                   | 1.05  | 1.39  | 3.235  | 0.243 | 0.453 | 0.14 | 5.5 | 155                   | 466 | 0.948           |             |           |
| GACZ63S | 63.5    | 100.013        | 36.07                  | 29.97 | 39.12 | 91.19  | 6.79  | 12.7  | 3.56 | 5   | 196                   | 589 | 1.13            |             |           |
| GACZ63S | 2.5     | 3.9375         | 1.42                   | 1.18  | 1.54  | 3.59   | 0.267 | 0.5   | 0.14 | 5   | 196                   | 589 | 1.13            |             |           |
| GACZ69S | 69.85   | 111.125        | 39.62                  | 32.38 | 43.18 | 100.33 | 7.46  | 13.08 | 4.6  | 5   | 231                   | 694 | 1.75            |             |           |
| GACZ69S | 2.75    | 4.375          | 1.56                   | 1.275 | 1.7   | 3.95   | 0.294 | 0.515 | 0.18 | 5   | 231                   | 694 | 1.75            |             |           |
| GACZ76S | 76.2    | 120.65         | 43.43                  | 35.69 | 47.24 | 109.52 | 8.17  | 14.68 | 4.6  | 5   | 279                   | 838 | 2.28            |             |           |

## GACZ..S

---

|         |       |         |       |       |       |        |       |       |      |   |     |     |      |
|---------|-------|---------|-------|-------|-------|--------|-------|-------|------|---|-----|-----|------|
| GACZ76S | 3     | 4.75    | 1.71  | 1.405 | 1.86  | 4.312  | 0.322 | 0.578 | 0.18 | 5 | 279 | 838 | 2.28 |
| GACZ82S | 82.55 | 130.175 | 47.24 | 39.24 | 51.56 | 118.74 | 9.04  | 16.66 | 4.6  | 5 | 332 | 995 | 2.89 |
| GACZ82S | 3.25  | 5.125   | 1.86  | 1.545 | 2.03  | 4.675  | 0.356 | 0.656 | 0.18 | 5 | 332 | 995 | 2.89 |