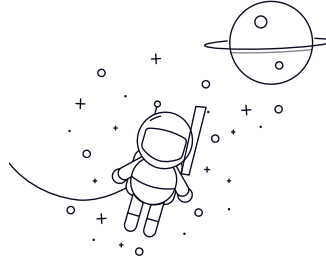


63000 Series



select Inquiry Bearing No. Boundary dimensions [mm] Basic load ratings(kN) Mass

			d	D	B	rs min	Dynamic(Cr)	Static(Cor)	Mass Kg
63001	12	28	12	-	-	-	-	-	-
63002	15	32	13	-	-	-	-	-	-
63003	17	35	14	-	-	-	-	-	-
63004	20	42	16	-	-	-	-	-	-
63005	25	47	16	-	-	-	-	-	-
63006	30	55	19	-	-	-	-	-	-
63007	35	62	20	-	-	-	-	-	-
63008	40	68	21	-	-	-	-	-	-
63009	45	75	23	-	-	-	-	-	-
63010	50	80	23	-	-	-	-	-	-