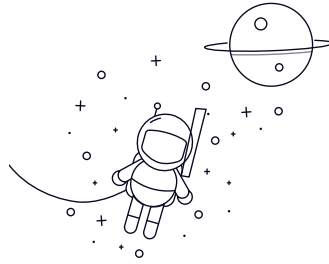


7900AC 系列



| select | Inquiry | 轴承 | 外形尺寸 (mm) | | | 基本额定载荷 (kN) | | 极限转速(转/分钟) | 质量 |
|--------|---------|-----|-----------|------|------|-------------|---------|------------|------|
| | | | d | D | B | 动态(Cr) | 静态(Cor) | (润滑脂) | 油 Kg |
| 7901AC | 12 | 24 | 6 | 3.2 | 1.7 | 28000 | 36000 | 0.011 | |
| 7902AC | 15 | 28 | 7 | 4.5 | 2.5 | 24000 | 32000 | 0.015 | |
| 7903AC | 17 | 30 | 7 | 4.8 | 2.7 | 22000 | 30000 | 0.017 | |
| 7904AC | 20 | 37 | 9 | 6.4 | 4 | 20000 | 28000 | 0.035 | |
| 7905AC | 25 | 42 | 9 | 7.5 | 5.2 | 18000 | 26000 | 0.042 | |
| 7906AC | 30 | 47 | 9 | 7.9 | 6 | 16000 | 24000 | 0.048 | |
| 7907AC | 35 | 55 | 10 | 11.7 | 8.8 | 14000 | 22000 | 0.075 | |
| 7908AC | 40 | 62 | 12 | 14.1 | 10.1 | 12000 | 20000 | 0.11 | |
| 7909AC | 45 | 68 | 12 | 15.4 | 12.2 | 10000 | 18000 | 0.13 | |
| 7910AC | 50 | 72 | 12 | 16.1 | 14.8 | 8000 | 16000 | 0.14 | |
| 7911AC | 55 | 80 | 13 | 18.7 | 17.5 | 7500 | 15000 | 0.183 | |
| 7912AC | 60 | 85 | 13 | 19 | 18 | 7000 | 14000 | 0.198 | |
| 7913AC | 65 | 90 | 13 | 19.4 | 20 | 6500 | 13000 | 0.212 | |
| 7914AC | 70 | 100 | 16 | 27.1 | 26.3 | 6300 | 12000 | 0.342 | |
| 7915AC | 75 | 105 | 16 | 27 | 27.7 | 6000 | 10000 | 0.36 | |
| 7916AC | 80 | 116 | 16 | 27.5 | 29 | 5500 | 10000 | 0.381 | |
| 7917AC | 85 | 120 | 18 | 38 | 39.1 | 5000 | 9000 | 0.542 | |
| 7918AC | 90 | 125 | 18 | 39.8 | 44.5 | 5000 | 8500 | 0.56 | |
| 7919AC | 95 | 130 | 18 | 40 | 45.5 | 4500 | 8500 | 0.604 | |
| 7920AC | 100 | 140 | 20 | 46.4 | 50 | 4300 | 8200 | 0.808 | |

7900AC 系列

| | | | | | | | | |
|--------|-----|-----|----|-------|-------|------|------|------|
| 7921AC | 105 | 145 | 20 | 47 | 55.2 | 4000 | 8000 | 0.83 |
| 7922AC | 110 | 150 | 20 | 49.7 | 55.3 | 3800 | 7500 | 0.88 |
| 7924AC | 120 | 165 | 22 | 68.4 | 77.6 | 3600 | 7200 | 1.15 |
| 7926AC | 130 | 180 | 24 | 73.4 | 88.1 | 3400 | 7000 | 1.54 |
| 7928AC | 140 | 190 | 24 | 74.5 | 90.2 | 3200 | 6800 | 1.64 |
| 7930AC | 150 | 210 | 28 | 95.6 | 117.2 | 3000 | 6500 | 2.97 |
| 7932AC | 160 | 220 | 28 | 135.4 | 158.6 | 2800 | 6300 | 3.12 |